

Instructions for use | COFFEE MAKER



ICM14011

1321139IDL/02.14\_01

## important safeguards

### **Please note:**

This symbol identifies important advice or information for the user.

- Read this instruction booklet carefully before installing and using the appliance. This is the only way to ensure the best results and maximum safety for the user.
- This is a household appliance only. It is not intended to be used in: staff kitchen areas in shops, offices and other working environment, farm houses, by clients in hotels, motels and other residential type environments, bed and breakfast type environments. Any other use is considered improper and thus dangerous.
- Materials and accessories coming into contact with food conform to EEC regulation 1935/2004.
- After positioning the appliance on the work top, leave a space of at least 5 cm between the surfaces of the appliance and the side and rear walls and at least 20 cm above the coffee maker.

### **Danger of burns!**

Failure to observe the warning could result in scalds or burns.

- This appliance is designed and made to "prepare coffee". Be careful to avoid being scalded by spraying water or steam or due to improper use of the appliance.
- When using the appliance do not touch the hot surfaces. Use the knobs or handles.
- Never touch the appliance with wet or damp hands or feet.
- The warming plate remains hot after the appliance has been used.

### **Important!**

Failure to observe the warning could result in injury or damage to the appliance.

- The manufacturer is not liable for damage caused by inappropriate, incorrect or irresponsible use.
- In the event of failure or malfunction, unplug the appliance from the mains. If it requires repair, contact De'Longhi Customer Services only and ask for original spare parts to be used. Failure to respect the above

could jeopardise the safety of the appliance.

- This appliance can be used by children aged from 8 years and above and persons with reduced physical, sensory or mental capabilities or lack of experience and knowledge if they have been given supervision or instruction concerning use of the appliance in a safe way and understand the hazards involved. Children shall not play with the appliance. Cleaning and user maintenance shall not be made by children without supervision.
- After removing the packaging, make sure the appliance is complete and undamaged. If in doubt, do not use the appliance and contact qualified personnel only.
- The packing elements (plastic bags, polystyrene foam, etc.) should be kept out of reach of children as they are a safety hazard.
- Place the appliance on a work surface far away from water taps, basins and sources of heat.
- Never install the appliance in environments where the temperature may reach 0°C or lower (the appliance may be damaged if the water freezes).

### **Danger!**

Failure to observe the warning may result in life threatening injury by electric shock.

- The power cable of this appliance must not be replaced by the user as the operation requires the use of special tools. If it is damaged or must be replaced, contact De'Longhi Customer Services to avoid all risk.
- Never immerse the coffee maker in water. It is an electrical appliance.
- Unplug the appliance and turn off the main switch when not in use. Do not leave the appliance switched on unnecessarily.
- As with all electrical appliances, use the coffee maker with care and common sense, particularly in the pre-

---

sence of children.

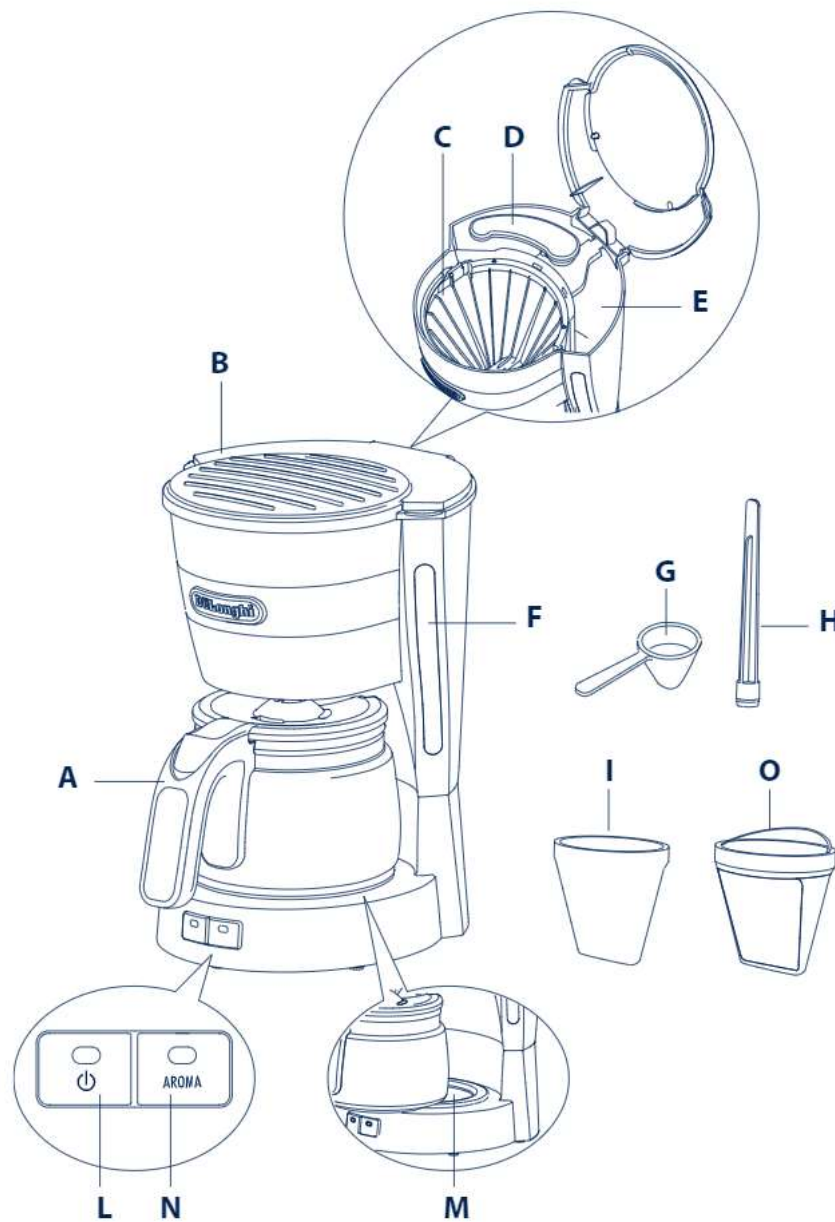
- Check that the voltage of the mains power supply corresponds to the value indicated on the appliance rating plate. Connect the appliance to an efficiently earthed electrical socket with a minimum rating of 10A only. The manufacturer declines all liability for any accidents caused by the absence of an efficient earth system.
- If the power socket does not match the plug on the appliance, have the socket replaced with a suitable type by a qualified electrician.
- When filling the water tank or removing the jug from the machine, avoid spilling liquid on the plug or power cable.

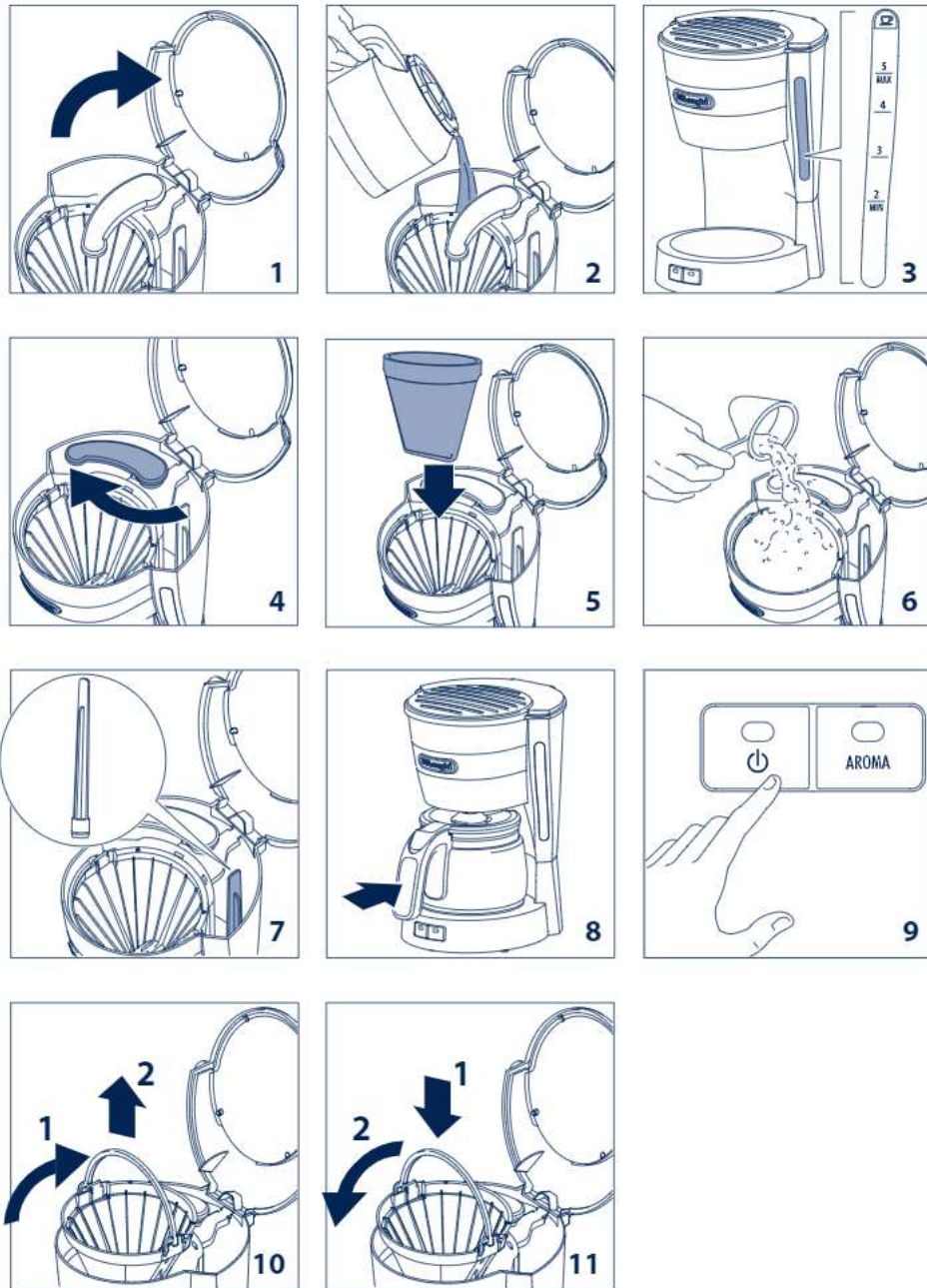
### **Disposing of the appliance**

In compliance with European directive 2002/96/EC, the appliance must not be disposed of with household waste, but taken to an authorised waste separation and recycling centre.




## description of appliance





## use

### Description of appliance

- A. Glass jug
- B. Coffee compartment and water tank lid
- C. Filter holder for filter coffee
- D. Shower
- E. Water tank compartment
- F. Water level window
- G. Measure
- H. Water tank filter
- I. Paper filter (1X2 type) (if provided)
- L.  "On/stand-by" button with light
- M. Warming plate
- N. Aroma button with light
- O. Permanent filter

### How to make filter coffee

**i Please note:** the first time the appliance is used, all accessories and the internal circuits must be washed through by making at least two jugs of coffee without using pre-ground coffee.

- Open the coffee compartment and water tank lid (B) (fig. 1) and use the jug (A) to pour clean cold water into the water tank compartment (E) up to the level indicated for the number of cups of coffee you want to make (fig. 2).  
Check the level of water in the tank through the level window (F) (fig. 3). You are recommended to use the jug provided as a measure as the maximum capacity of the jug and the tank are the same.
- Turn the shower (D) (fig. 4). Position the paper filter (I) or the permanent filter (O) in the filter holder (C) (fig. 5).
- Place the pre-ground coffee in the filter using the measure (G) provided and level evenly (fig. 6).  
Use good quality, medium pre-ground coffee for filter coffee makers.  
The type of blend has a considerable influence on the coffee you make.  
You should therefore try various types of coffee to find the one best suited to your taste.


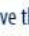
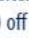
### Recommended quantities:

No. cups	No. measures (*)
5	5
4	4
3	3
2	2

(\*) 1 level measure = 1 tablespoon (5 g)

For a stronger taste we suggest to add 1 more measure for each cup.

The quantities given in the table are indicative and should be adapted to your personal taste and the type of coffee. Never exceed the maximum quantity of 5 measures. The type of blend has a considerable influence on the coffee you make. You should therefore try various types of coffee to find the one best suited to your taste.

- Close the lid (B) and place the closed jug on the plate (fig. 8).
- Press the  button (L) (fig. 9). The light on the switch indicates that the coffee maker is operating. Coffee delivery will start after a few seconds. It is completely normal for the appliance to give off steam while the coffee is percolating. The coffee maker emits a beep when delivery begins, then three beeps when it ends. The taste of the coffee can be optimised by pressing the AROMA button (N). This function enables a process of percolation which delivers the water into the filter more slowly. Filtering a little at a time improves the flavour and aroma of the coffee. To enable the function, press the aroma button (the light on the button comes on). To disable the function, press the button again. You are recommended to use the AROMA button when you do not want to make a full jug of coffee.
- If you leave the  button (L) pressed after percolation has finished, the plate will keep the coffee at the ideal temperature. The appliance goes off automatically 40 minutes after coffee delivery ends. To turn the warming plate (M) off press the  button (L) again. For a new brewing cycle switch off the appliance pressing button (L) and restart.

**i Please note:** removing the jug before all the coffee has been delivered does not interrupt coffee making, but merely blocks flow into the jug. If you want to pour out a little

coffee immediately, you should do so as quickly as possible in order to avoid the coffee overflowing in the filter.


### Cleaning and maintenance

Before maintenance or cleaning of the appliance, turn off, unplug from the mains socket and allow to cool.

- Do not use solvents or abrasive detergents to clean the coffee maker. Just wipe with a soft, damp cloth.
- Never immerse the coffee maker in water. It is an electrical appliance.
- The water tank filter (H) can be reached through the coffee compartment and water tank lid (B) (fig. 7). Clean when necessary.

### Descaling

If the water in your area is hard, limescale builds up over time. These deposits may affect correct operation of the appliance. You are recommended to descale the coffee maker every 60 coffee making cycles. To descale, always use De'Longhi descaler or special commercially available descaling products for filter coffee makers.

1. Dilute the product in the jug, following the instructions on the descaler pack.
2. Pour the solution into the water fill compartment.
3. Place the jug on the warming plate (M).
4. Press the  button (L), percolate the equivalent of one cup then turn the appliance off.
5. Leave the solution to work for 15 minutes, then repeat operations 4 and 5.
6. Turn the appliance on and deliver the water until the tank is completely empty.
7. Rinse by operating the appliance with water only at least 3 times (3 complete tanks of water).

Failure to clean as described above invalidates the guarantee.

 The appliance complies with the following EC directives:

- Low Voltage Directive 2006/95/EC and subsequent amendments;
- EMC Directive 2004/108/EC and subsequent amendments
- EC Regulation 1275/2008 for standby

### Troubleshooting

Problem	Probable cause	Solution
The coffee takes longer to brew.	The coffee maker needs to be descaled.	Descal the machine as described in the section DESCALING.
	The Aroma function may be activated.	Turn off the aroma function for faster brewing.
The coffee has an acidic taste.	Insufficient rinsing after descaling.	Rinse the machine as described in the section DESCALING.

### Technical data

Mains voltage:	220-240V-50-60Hz
Absorbed power:	650W
Weight:	1.250 kg